


Children Services: Education and Early Intervention

MODEL SCHOOL POLICY FOR CHILDREN LOOKED AFTER

PUBLICATION SCHEDULE NUMBER:	CSF4093
PUBLICATION DATE: APRIL 2015	ISSUE NO: 6
AUTHORISING OFFICER:	Jenny Coles
AUTHORISING OFFICER'S SIGNATURE:	
AUTHOR OF PUBLICATION:	Felicity Evans
POST:	Virtual School Head
UNIT:	The Virtual School: Children's Services
REVIEW DATE:	September 2017
TARGET AUDIENCE:	School Head Teachers, Designated Teachers and School Governors
PUBLISHED BY Hertfordshire Children's Services	



This policy was adopted by the Governing Body of Kingswood Early Years Centre November 2016. It will be reviewed in November 2018, or sooner if HCC bring out a new policy. Please note: text in blue is additional notes applicable to Kingswood.

INDEX

	Page
Background	3
The Policy	4
School Responsibility	8

SCHOOL POLICY FOR CHILDREN LOOKED AFTER

Background

There has been concern since the mid-Seventies that the education of children in care has been neglected. Conversely, from about the same time, attention was also being drawn to the important part that successful schooling could play in helping children escape from social disadvantage. In 1995, a joint report by the Social Services Inspectorate and Ofsted stated that the care and education systems were failing to promote the educational achievement of children in care and drew attention to:

- Poor exam success rates in comparison with the general population
- A high level of disruption and change in school placements
- Lack of involvement in extracurricular activities
- Inconsistent or no attention paid to homework
- Underachievement in further and higher education

It is, therefore, essential that schools promote the achievement of such vulnerable children, who may also face additional barriers because of their race, ethnicity, religion and beliefs, sexual orientation or because they are disabled. All schools should have a policy for Children Looked After that is subject to review and approval by the Governing Body. The policy should set out not only the ethos of the school in its approach to meeting the needs of children looked after by a local authority, but also the procedures that will ensure participation in high quality teaching and learning and in making good or accelerated progress.

The Children Act (1989) introduced changes in terminology. The term 'in care' now refers solely to children who are subject to Care Orders. Children who are cared for on a voluntary basis are 'accommodated' by the local authority. Both these groups are said to be 'looked after children' (LAC) or children in care or 'children looked after' (CLA) by the local authority, the term used by Hertfordshire. Accommodated children also include those in receipt of respite care – if it exceeds 20 days in one episode or over 120 days a year.

It is important not to confuse a young person's legal status with their living arrangements. For example, a child on a Care Order can be living with:

- Foster carers
- In a children's home
- In a residential school
- With relatives, or
- Even with parents – under supervision of Children's Services

Similarly, an 'accommodated' child can be living:

- In foster care
- In a children's home, or
- In a residential school

This policy incorporates requirements set out in the statutory guidance on the duty on local authorities to promote the educational achievement of looked after children

under section 52 of the Children Act 2004, the Role and Responsibilities of the Designated Teacher – Statutory Guidance for School Governors (2009) and the Hertfordshire Policy Statement on Children Looked After and should be read in conjunction with it. All schools have been issued with a copy of each document and may also refer to the Virtual School page on the Hertfordshire GRID for Learning, www.thegrid.org.uk/virtualschool.

The Children and Families Act 2014 amends section 22 of the Children Act 1989 to require every local authority in England to appoint an officer employed by the authority, or another authority, to make sure that its duty to promote the educational achievement of its looked after children is properly discharged. This officer is referred to as the Virtual School Head (VSH). In Hertfordshire, Felicity Evans is the Virtual School Head.

It is also important to remember that while Parental Responsibility (PR) for the young person normally lies with the Local Authority and/or the parents, responsibility for day to day decisions is often delegated to the foster carers or staff at the residential home. It is therefore important to ascertain who holds PR and what if any authority has been delegated to carers as soon as possible. Each case will be different as to who will have responsibility and who will need to be kept informed.

The Policy

The Objective:

To promote the educational achievement and welfare of children looked after on the roll of the school. (Please note that in the academic year 2016-17 the role may be extended to include children 'Post-LAC' – children adopted from care, subject to a Special Guardianship Order (SGO) or Child Arrangement Order).

The Name of the Designated Teacher for Children Looked After for the school:

Elaine McKeer

The Role of the Designated Teacher for Children Looked After *Within School Systems:*

- To ensure that the educational achievement of each child looked after on roll is monitored, tracked and promoted and wherever possible, accelerated;
- To ensure that there is an up to date Personal Education Plan or ePEP with SMART targets that will promote progress; *Please note the ePEP (electronic version of the Personal Education Plan), is still in the development stage. Early years CLA children have paper copies of the PEP)*
- To advise on most effective use of the core Pupil Premium Plus during the Personal Education Planning meeting; *Please note, Early Years pupils do not get Pupil Premium Plus. An Early Years child would receive the Early Years Pupil Premium @ 52p an hour (£302 for a year).*
- To ensure that the Pupil Premium Plus funding and any additional funding (where relevant) is used to support the learning objectives for the student and to be accountable for how the funding is spent and able to produce evidence of good progress and outcomes;
- To ensure that all staff, both teaching and non-teaching, are aware of the difficulties and educational disadvantage faced by children and young people 'in care' including a basic knowledge of attachment and trauma on behaviour and learning and understanding of the need for positive systems of support within the school, to overcome them;

- To actively inform members of staff of the general educational needs of children who are in care, and to promote the involvement of these children in school homework clubs, extra-curricular activities, home reading schemes, school councils, etc.;
- To ensure that members of staff who teach the children looked after on roll provide accurate progress data and advice on specific learning targets to inform the target setting at the Personal Educational Planning meeting;
- To act as an advocate for children and young people in care;
- To develop and monitor systems for liaising with carers and colleagues in Children's Services, (CS) and birth parents where appropriate;
- To hold a supervisory brief for all children in care on roll, e.g. to ensure all relevant education and care information is available to school staff where relevant and carer (s), and that this information is kept up to date, used on a need to know basis to help the student overcome obstacles to learning and to make good progress;
- To track and support the educational progress of all children who are looked after in order to inform the school's development plan;
- To intervene quickly if there is evidence of individual underachievement by use of the Pupil Premium Plus funding to accelerate progress;
- To intervene if there is evidence of absence from school or internal truancy;
- To inform the planning and where relevant, transition for children looked after post 16;
- To ensure that the educational targets within the Personal Education Plan are implemented fully, reviewed regularly and that all relevant school staff are aware of them;
- To report to the Governing Body, at least on an annual basis (preferably each term), on the outcomes for children looked after. The CLASEF can be used as the report to the Governing Body, (a model proforma is available on the GRID);
- To have completed the iLearn online learning module/s specifically for Designated Teachers and to attend other training as appropriate;
- To ensure that school staff have an awareness of the impact of attachment disorder and pre-care trauma on learning;
- To support the Quality Assurance Process for PEPs and for schools by HfL to support the implementation of the role and responsibility of the Designated Teacher working with children looked after.

Work with Individual Children Looked After

- To discuss with individual children, possibly alongside a carer, to arrive at a statement about their care arrangements and circumstances that they would be happy to share with staff and/or pupils;
- To enable the child to make a contribution to the educational aspects of their Care Plan;
- To ensure that the Pupil Voice section of the Hertfordshire Personal Education Plan/ePEP is completed for each child and is the result of a one to one meeting so that the views of the student are faithfully represented in the PEP;
- To ensure that a Home-School Agreement is drawn up with the primary carer and signed by the Social Worker;
- To supervise the smooth induction of a new child looked after into the school;
- To develop in-school strategies to track, promote and accelerate the achievement of looked after children and close the gap between them and their peers;

- To fully support additional learning opportunities that may be available from the Virtual School and partner agencies.

Liaison:

- To liaise with the member of school staff responsible for monitoring children on the Child Protection Plan;
- To develop effective communication with Children's Services, (CS) staff so that the Personal Education Plan or ePEP is congruent with the child's Care Plan;
- To attend, or arrange for someone else to attend, or to contribute in other ways to care planning meetings and statutory reviews;
- To be named contact for colleagues in Children's Services, (CS);
- To ensure the speedy transfer of information between schools, agencies and individuals, and report on the progress and attendance of all children in care on the school roll to the Virtual School as requested – Progress and attainment data submitted each term.

Training:

- To ensure all school staff have training on working effectively with vulnerable learners;
- To attend the annual Designated Teachers conference and participate in area termly briefings and to be willing to share good practice;
- To develop knowledge of procedures by attending training events organised by the Children's Services, (CS) and the Virtual School. To complete the annually updated iLearn on-line learning module;
- To keep informed of any updated guidance from Ofsted, DfE, other research or policy. This may be done easily by following the Virtual School on Twitter @VS_HCC.

Governor

The name of a Governor with special responsibility for Children Looked After in the school: Chris Munroe

The role of that governor

The named governor will report to the Governing Body on an annual basis using the report from the Designated Teacher as source information:

- The number of looked after pupils in the school;
- A comparison of progress as a discrete group, compared with those of other pupils in school and nationally;
- A comparison of attainment measures as a discrete group, compared with those of other pupils in school and nationally;
- The attendance of pupils as a discrete group, compared to other pupils;
- The number of fixed term/permanent exclusions; and
- Pupil destinations after leaving the school.

The named governor should be satisfied that the school's policies and procedures ensure that looked-after pupils have equal access to:

- [The Early Years Curriculum](#)
- [Additional educational support](#)
- [The most effective use of the EYPP to raise attainment and diminish differences](#)

The named Governor may want to ensure that the whole Governing Body have a full understanding of the efficient and effective use of Pupil Premium including Pupil Premium Plus. The Governance Team offers a two hour course for this purpose. Please contact: Hannah.stewart@hertsforlearning.co.uk

School Responsibility

It is important that all teaching staff who are in contact with the child or young person is aware that he/she is being looked after by the Local Authority. The responsibility for the transfer of this information should be that of the Head Teacher and/or the Designated Teacher for Children Looked After.

It is appropriate for a member of the support staff team to have knowledge that the young person is in care only when directly involved in the teaching of the young person. However, it is important that these staff are aware of the effect of attachment and trauma on the behaviour and learning of these children.

In the absence of the usual class teacher, some information regarding the child's circumstances should be shared with the teacher covering the class. The extent of this sharing should be determined by the Headteacher or the Designated Teacher for Children Looked After.

Admission Arrangements

On admission, records will be requested from the pupil's previous school and a meeting will be held with carer/parent/Social Worker as appropriate – but always involving someone with parental responsibility.² This will provide information to

² Education Law defines who is a parent very widely. It includes anyone who has parental responsibility for a child or who has care for them. This means it is possible for someone who does not have parental responsibility to be a 'parent' because they have care of the child in question for example the foster carer.

Ref

Section 576 Education Act 1996

Children Act 1989 (amended)

'If this were my child' (Local Government Information Unit 2003)

The Pupil, Premium: How schools are using the pupil premium to raise achievement for disadvantaged pupils (DfE 2012)

inform the Personal Education Plan (ePEP). An appropriate school induction must take place.

Involve the Young Person

It is important that a young person is aware that information is being recorded regarding their personal circumstances. How this is shared with them clearly depends on their age and understanding. The explanation should emphasise that the school, the Social Worker, and their carer(s) are working together to promote their education.

It is important that the young person is supported to complete the Pupil Voice section of the Personal Education Plan by the Designated Teacher to inform the ePEP and Care Plan review meetings

It is important to establish the child's view of their changed circumstances and what they want others to know. It is also important to ensure that a Social Worker/teacher/carer prepares the child for situations when they may be asked about home, e.g. by other pupils in the playground.

Communication with Other Agencies

Schools should ensure that a copy of all reports (e.g. End of year reports) should be forwarded to the young person's Social Worker in addition to the foster carer or Residential Social Worker and the Virtual School, and where appropriate, the birth parents. A copy should also be attached to the child's ePEP.

School, education and social work colleagues within Children's Services should endeavour to co-ordinate their review meetings, e.g. to have an Annual Statement or EHC plan Review and a Personal Education Plan or ePEP meeting or review.

Good communication is essential between professionals. It is important to exchange information between formal reviews if there are significant changes in the young person's circumstances, e.g. if the school is considering a change of course, there is a change of care placement or there are significant issues that will affect educational provision e.g. behaviour or attendance.

Assessment, Monitoring and Review Procedures

Each pupil in care will have a Care Plan that will include a Personal Education Plan (PEP) that is developed jointly by the Social Worker and Designated Teacher. This will identify specific areas of focus and include targets and associated actions to improve performance, progress or educational achievement. Areas for consideration will include:

- Achievement Record (academic or otherwise);
- Development needs (short and long term development of skills, knowledge or subject areas and experiences); and

For more information please go to:

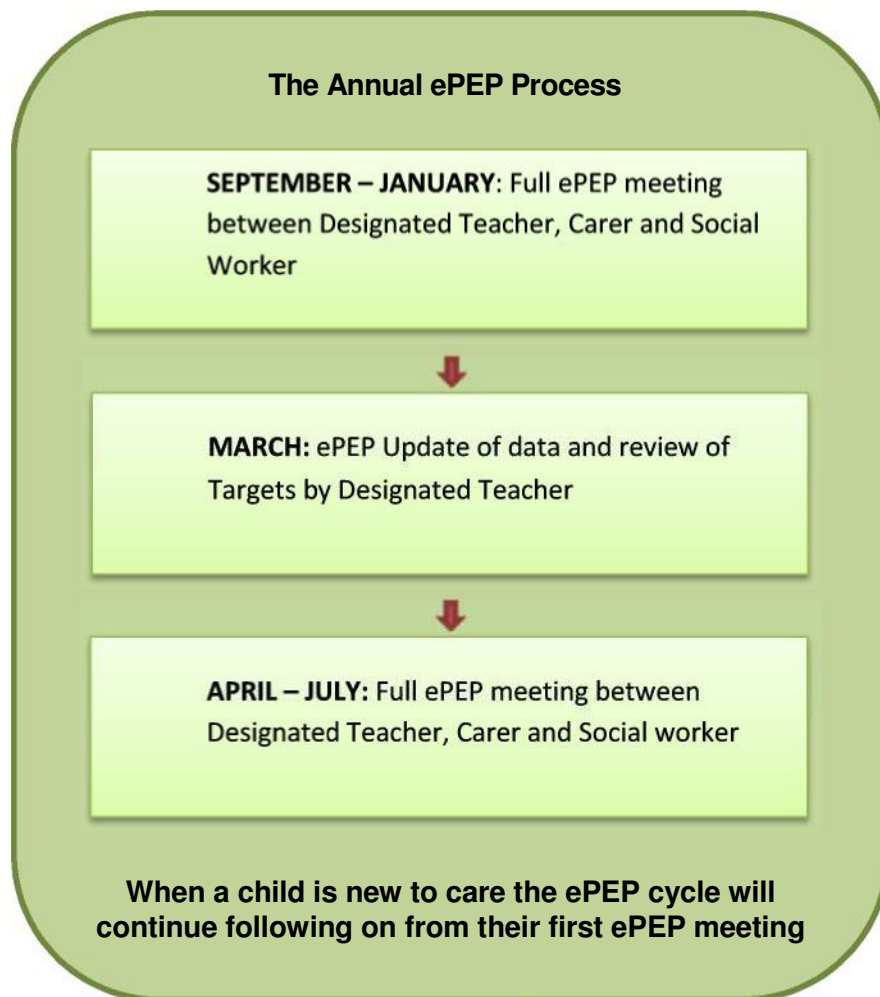
www.thegrid.org.uk/virtuelschool

- Long term plans and aspirations (targets including progress, career plans and aspirations);
- Educational Data so that progress may be easily tracked between Key Stages;
- Effective use of the **Early Years** Pupil Premium and evidence of impact;
- Extended learning opportunities;
- Involvement in Out of School Hours Activities;
- Special needs (if any);
- Attendance;
- Behaviour.

The named governor will report annually to the Governing Body on the progress of all children looked after against the key indicators outlined above.

Change History:

Issue	Date	List of Changes	Approved by	Authorised by
1	Oct 2012			
2	Sep 2014	This is a new Policy from County dated Aug 2013. The main changes are the references to 'Pupil Premium', which Early Years do not currently get. See BJ notes in red on Page 4.	Governing Body	Bernice Jackson
3	Nov 2016	This is a new policy from County dated Aug 2016. The main changes refer to the electronic version of the Personal Education Plan. (ePEP). This is currently being devised for Early Years. There is more emphasis on all staff being involved in ensuring CLA children make accelerated progress. The charts below are new. CLA children can join at any time, so timelines would be decided according to when a child joins.	Governing Body	Bernice Jackson



Please find more information on our website: www.thegrid.org.uk/virtualschool

November 2015 Research & Good Practice (incl Archive)	Information for Schools & Settings	The Personal Education Plan	News, Events & Meetings
The Virtual School Team		Training & CPD	
Additional Learning Opportunities & Interventions	Education, Training & Employment Post 16	Policies & Guidance	The Virtual School Information Report